

Test: Primary 3 - Term 2 (SA1) Science (Nan Hua)

Points: 48 points

Name: _____

Score: _____

Date: _____

Signature: _____

Select multiple choice answers with a cross or tick:

Only select one answer

Can select multiple answers

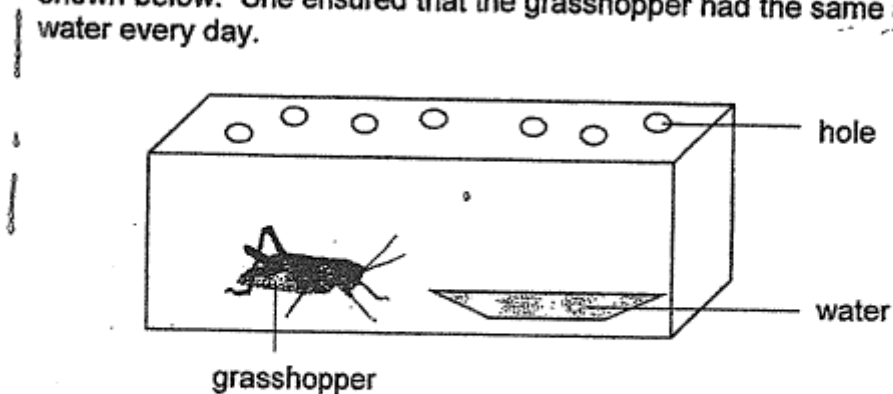
Question 1 of 35

Primary 3 Science (Term 2) 2 pts

Section A: (24 x 2 marks = 48 marks)

For each question from 1 to 24, four options are given. One of them is the correct answer.

Jane placed a grasshopper and a dish of water in a glass container as shown below. She ensured that the grasshopper had the same amount of water every day.

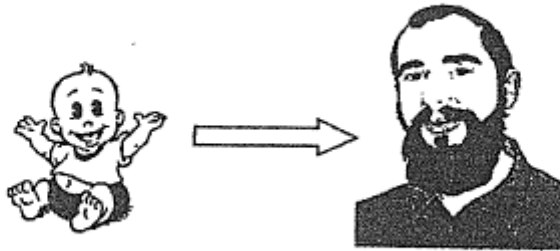


After a few days, she discovered that the grasshopper in the glass container died.

This shows that living things need _____ to survive.

- A) air
- B) food
- C) water
- D) sunlight

Sam was flipping through his father's photo album and he noticed the changes in his father from a baby to an adult.



What characteristic of living things does the above changes show?

-
- A) Living things can grow.
 - B) Living things can move.
 - C) Living things can reproduce.
 - D) Living things can respond to changes.

Study the table below carefully.

	A	B	C
Does it have feathers?	No	Yes	No
Does it have scales?	Yes	No	No
Does it have legs?	No	Yes	Yes

Which of the following correctly shows what A, B and C could be?

	A	B	C
(1)	Bird	Fish	Amphibian
(2)	Mammal	Fish	Bird
(3)	Fish	Bird	Amphibian
(4)	Amphibian	Mammal	Bird

-
- A) 1
- B) 2
- C) 3
- D) 4

Compare the two organisms below.



mushroom

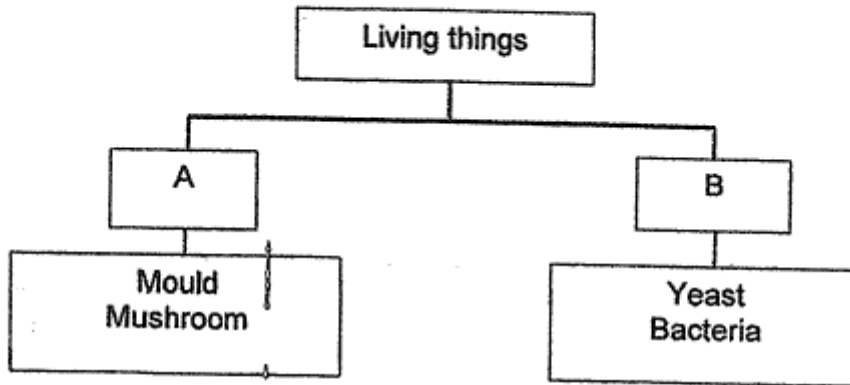


fern

Which one of the following statements about the mushroom and the fern is **incorrect**?

-
- A) Both reproduce by spores.
 - B) Both do not produce flowers.
 - C) Both need sunlight to stay alive.
 - D) Both cannot move from place to place on their own.

Study the classification chart below carefully.

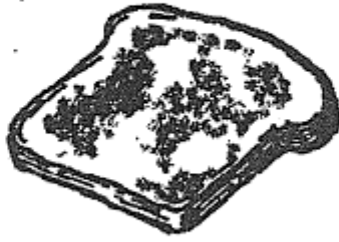


Which of the following headings best represent A and B?

	A	B
(1)	Fungi	Plant
(2)	Useful to man	Harmful to man
(3)	Can be seen with naked eyes	Cannot be seen with naked eyes
(4)	Can make its own food	Cannot make its own food

- A) 1
- B) 2
- C) 3
- D) 4

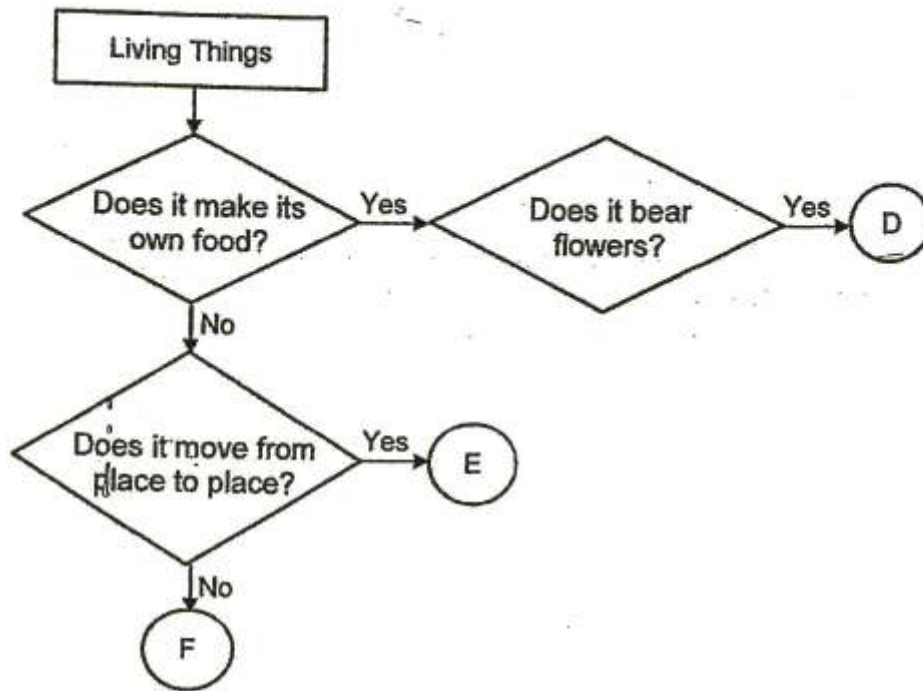
A piece of bread was left on the kitchen table. After a few days, tiny black spots were formed on the bread as shown in the diagram below.



Which group of living things do the tiny black spots belong to?

-
- A) Plant
 - B) Fungi
 - C) Animal
 - D) Bacteria

The flow chart below shows the characteristics of living things D, E and F.



Which groups of living things do D, E and F represent?

	D	E	F
(1)	Flowering plants	Fungi	Bacteria
(2)	Flowering plants	Animals	Fungi
(3)	Non-flowering plants	Fungi	Bacteria
(4)	Non-flowering plants	Animals	Fungi

- A) 1
- B) 2
- C) 3
- D) 4

A glass bottle breaks easily when dropped. Which object below has a similar property as the glass bottle?

(1)



ceramic pot

(2)



armour

(3)



school bag

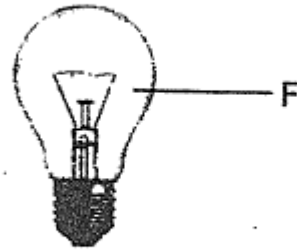
(4)



wooden chair

-
- A) 1
 - B) 2
 - C) 3
 - D) 4

Study the pictures below.



Which one of the following materials is suitable for making parts E and F?

-
- A) Wood
 - B) Glass
 - C) Metal
 - D) Fabric

Tony noted down his observations of Object P.

- It is light.
- It is flexible.
- It absorbs water.



Which of the following could object P be?

(1)



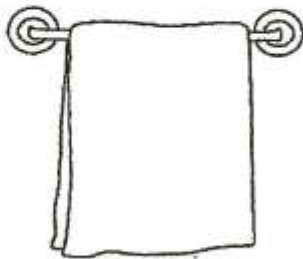
rubber duck

(2)



metal ruler

(3)



bath towel

(4)



drinking straw

- A) 1
- B) 2
- C) 3
- D) 4

Study the grouping below.

Group E	Group F
Tissue paper	Glass rod
Raincoat	Metal cup

The objects are grouped according to whether they are _____.

- A) strong
- B) flexible
- C) waterproof
- D) transparent

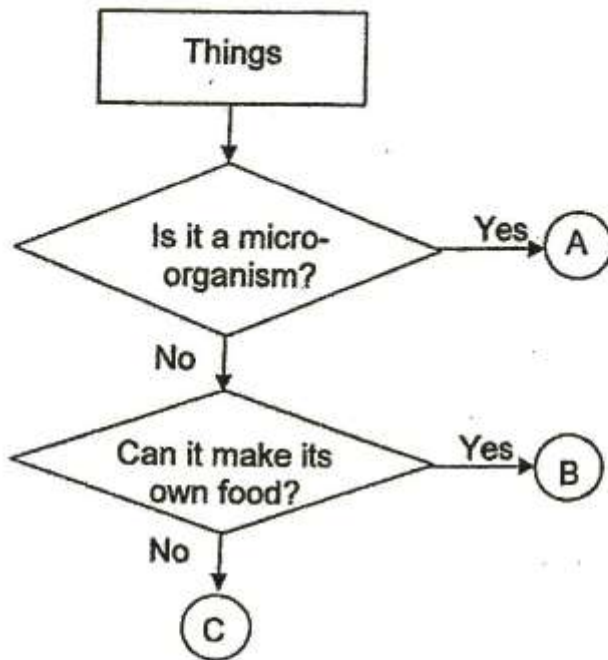
Study the picture below.



Which one of the materials **cannot** be used to make a fork?

- A) Wood
- B) Metal
- C) Fabric
- D) Plastic

Study the flow chart below.



Which of the following correctly represent A, B and C?

	A	B	C
(1)	Fungi	Animal	Plant
(2)	Fungi	Bacteria	Plant
(3)	Bacteria	Animal	Fungi
(4)	Bacteria	Plant	Fungi

- A) 1
- B) 2
- C) 3
- D) 4

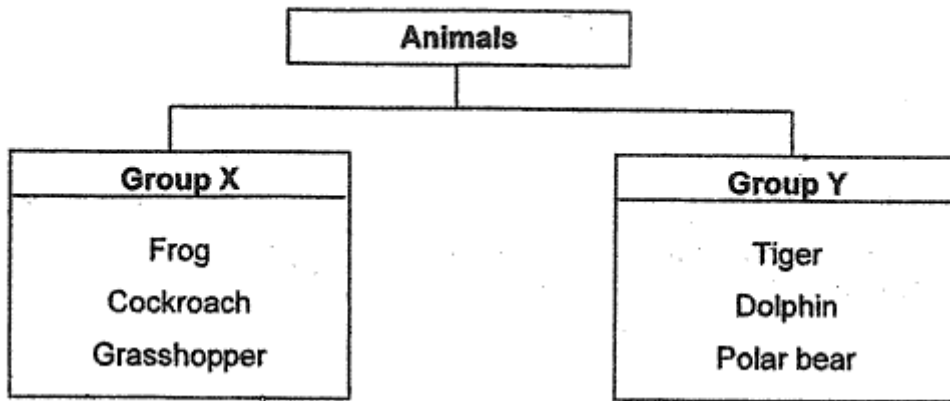
Kenny kept some guinea pigs in his cage. He fed them daily with food and water. He recorded the number of guinea pigs in the cage every two months, as shown in the table below. No guinea pigs were added or taken out of his cage.

Month	Number of guinea pigs
January	2
March	2
May	4
July	6

Based on the table above, what can you conclude about living things?

-
- A) Living things can die.
 - B) Living things can reproduce.
 - C) Living things can respond to changes.
 - D) Living things need air, food and water to survive.

Study the two groups of animals below carefully.

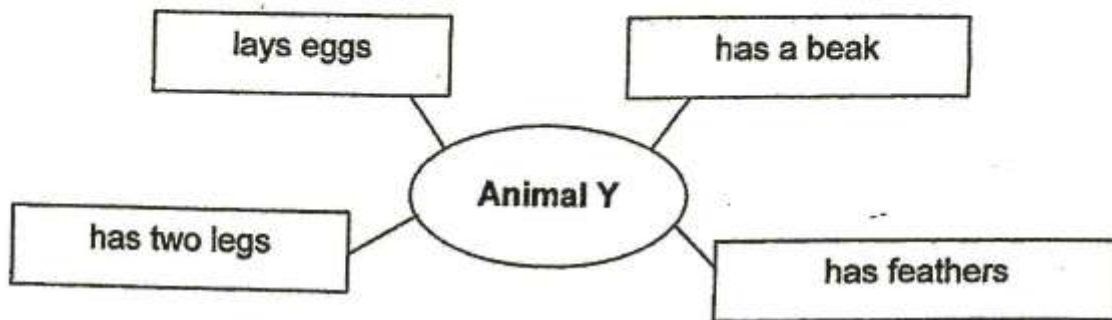


Which of the following correctly describes the animals in group X and Y respectively?

	Group X	Group Y
(1)	Have six legs	Have four legs
(2)	Have wings	Have no wings
(3)	Have a pair of feelers	Have no feelers
(4)	Lay eggs	Give birth to young alive

- A) 1
- B) 2
- C) 3
- D) 4

Study the information about Animal Y in the diagram below.







From the information above, what can you conclude about Animal Y?

- A Animal Y can fly.
- B Animal Y is a mammal.
- C Animal Y is not an insect.

-
- A) A only
 - B) C only
 - C) A and C only
 - D) B and C only

Study the table below carefully.

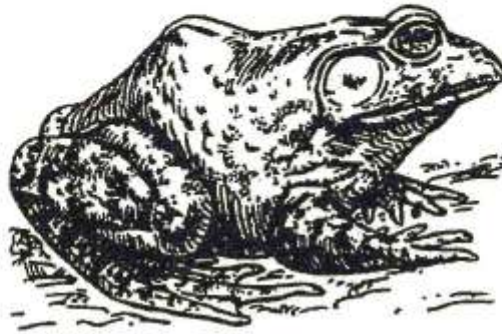
Group X	Group Y
 <p data-bbox="475 616 564 651">catfish</p>	 <p data-bbox="890 719 963 754">horse</p>
 <p data-bbox="454 929 584 965">swordfish</p>	 <p data-bbox="885 1048 995 1084">monkey</p>

Which of the following are suitable headings for Group X and Group Y?

	Group X	Group Y
(1)	Breathe through gills	Breathe through lungs
(2)	Have scales	Have feathers
(3)	Feed young with milk	Do not feed young with milk
(4)	Have fins	Have wings

- A) 1
- B) 2
- C) 3
- D) 4

Joshua, Norman and Serena observed the animal below. .



After their observations, they made the following statements.

Joshua : The animal gives birth to young alive.

Norman : The animal is an amphibian because it has moist skin.

Serena : The animal is an insect because it has three body parts.

Whose statement is correct?

-
- A) Joshua only
 - B) Norman only
 - C) Joshua and Serena only
 - D) Norman and Serena only

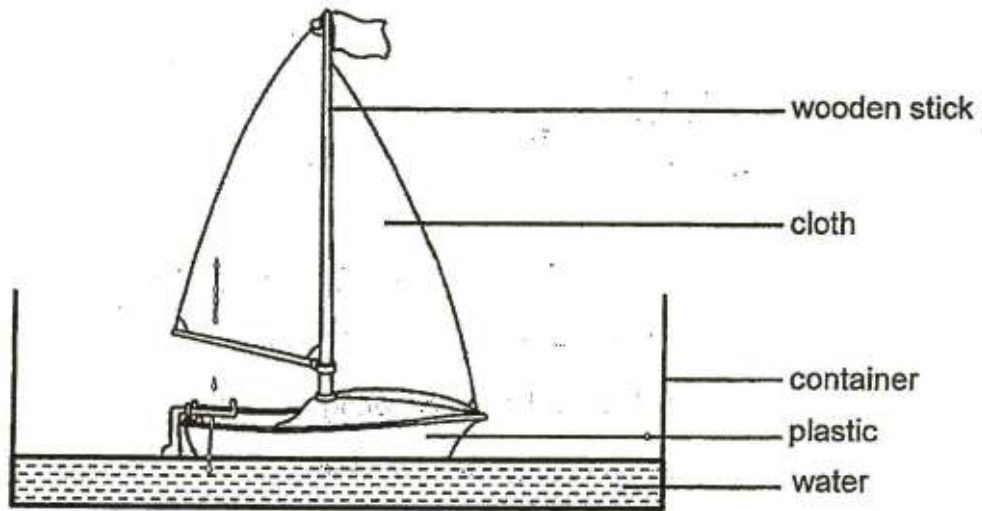
The table below shows the characteristics of four organisms, P, Q, R and S. A tick (✓) shows that the organism has that characteristic.

Characteristics	P	Q	R	S
Has 4 legs	✓	✓		✓
Has moist skin	✓			
Young hatches from egg	✓		✓	✓
Body is covered with scales				✓
Has hard body covering			✓	
Feeds its young with milk		✓		

Which animal is most likely a reptile?

-
- A) P
- B) Q
- C) R
- D) S

A group of pupils made a toy sailboat using some materials as shown in the picture below.

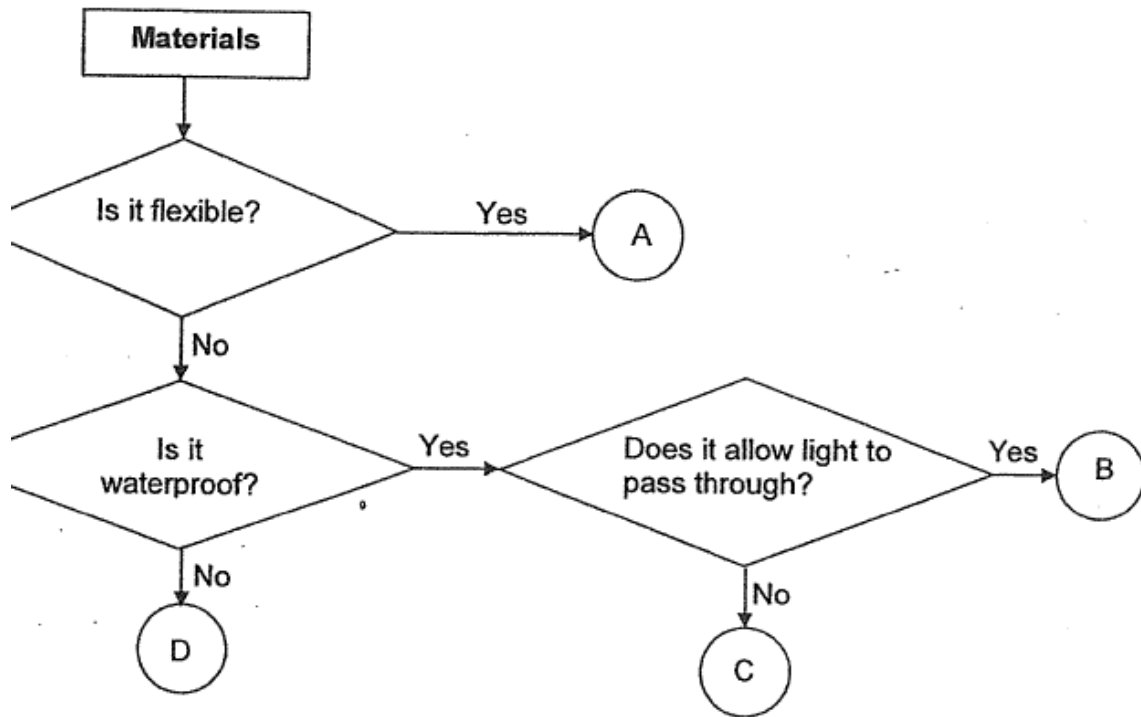


Which one of the following properties of the materials made them suitable for making the parts of the toy sailboat?

	cloth	wooden stick
(1)	It absorbs water.	It is strong.
(2)	It is flexible.	It floats in water.
(3)	It floats in water.	It is waterproof.
(4)	It is flexible.	It is strong.

- A) 1
 B) 2
 C) 3
 D) 4

Study the flow chart below.



Which one of the letters, A, B, C or D, can be used to make the glass cover of a watch?



- A) 1
- B) 2
- C) 3
- D) 4

Malik observed some materials and recorded his observations in the table below. A tick (✓) shows that the material has the characteristic.

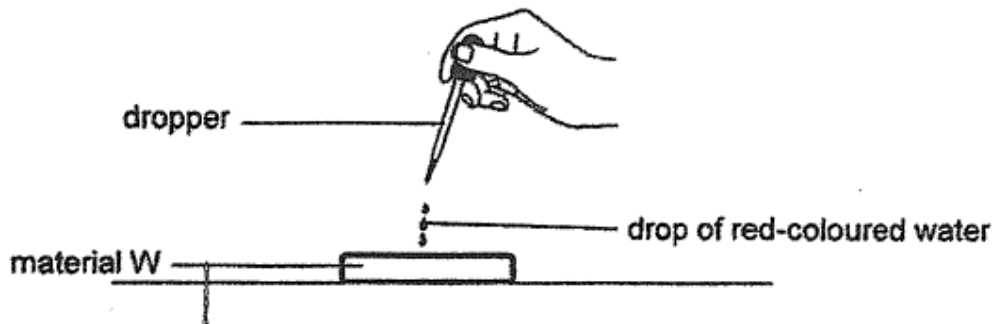
Properties	Materials			
	P	Q	R	S
Waterproof	✓	✓	✓	
Flexible	✓		✓	✓
Transparent		✓		
Tears easily	✓			✓

Which material is most suitable for making a pair of rubber boots to be used on rainy day?



- A) P
- B) Q
- C) R
- D) S

Siew Ting conducted an experiment as shown in the set-up below.



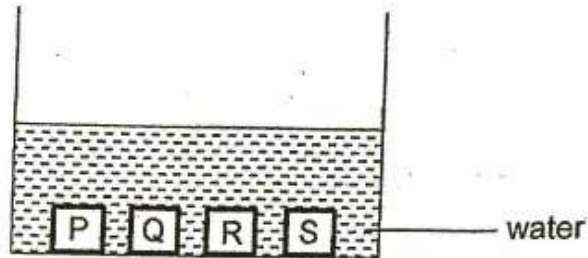
She dropped 5 drops of coloured water onto material W. She repeated her experiment with materials X and Y and recorded her observations in the table shown below.

Material	Observation
W	The water is absorbed and left a red-coloured patch on the material.
X	The drops of red-coloured water stayed on the surface.
Y	The drops of red-coloured water rolled off the surface.

Siew Ting was trying to find out if the materials are _____.

- A) strong
- B) flexible
- C) waterproof
- D) transparent

Mr Ling placed 4 blocks of different materials of the same size into a container of water as shown in the diagram below.



He recorded the results in the table below.

Material	Mass at the start of the experiment (g)	Mass at the end of the experiment (g)
P	100	100
Q	100	102
R	100	140
S	100	150

Which of the material, P, Q, R or S does not absorb water?

- A) P
- B) Q
- C) R
- D) S

Section B

This section is designed for extended answers that parent/ teacher will have to assign and guide child to attempt after the test has been completed.

Grading: This question type is not graded on this system and will not affect the final score as it was designed in such a way that it requires manual assistance.

Maria has a plant, a doll and a hamster in her room.



plant



doll



hamster

She describes their characteristics in the table below.

Characteristic	F	G	H
Can it make food?	Yes	No	No
Can it reproduce?	Yes	Yes	No
Can it respond to changes?	Yes	Yes	No

Which letter, F, G or H, represents the hamster?

Explain your answer in (a).

26. Study the pictures below.



Crab



Pencil

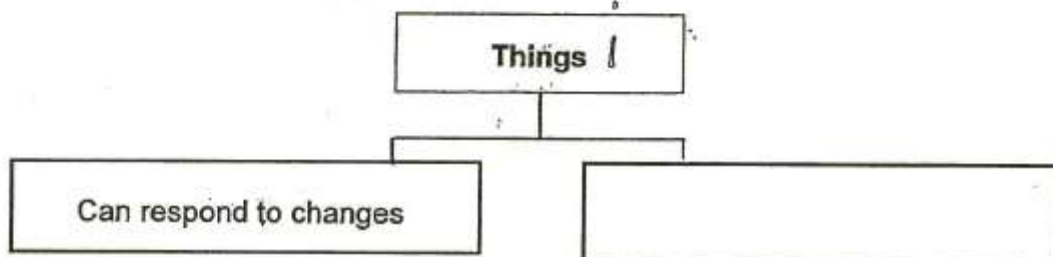


Tree

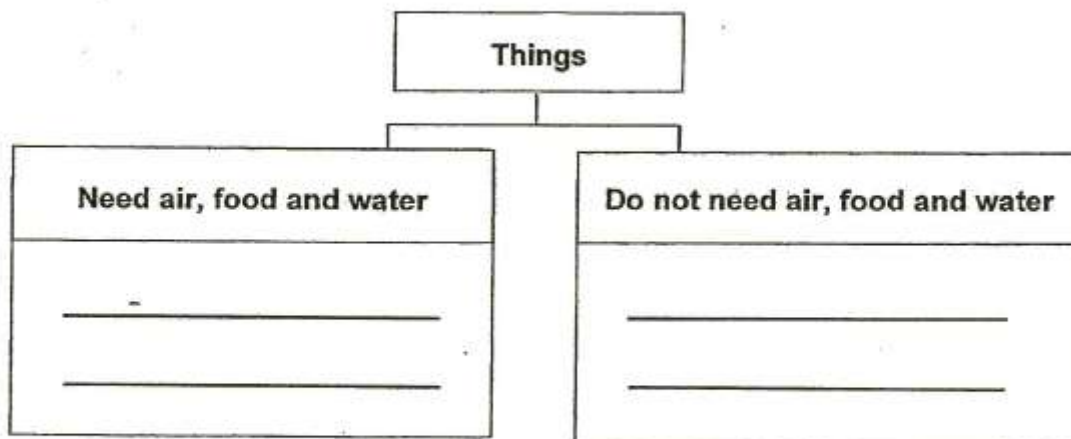


Button

- (a) The objects have been grouped in a certain way. One of the headings has been given to you. Give a suitable heading for the other group. [1]



- (b) The things above can be grouped in another way. Classify all the items above in the correct group. [2]



- c) Describe the difference between how plants and fungi obtain food. [1]

27. Study the pictures of the three animals below.



A



B



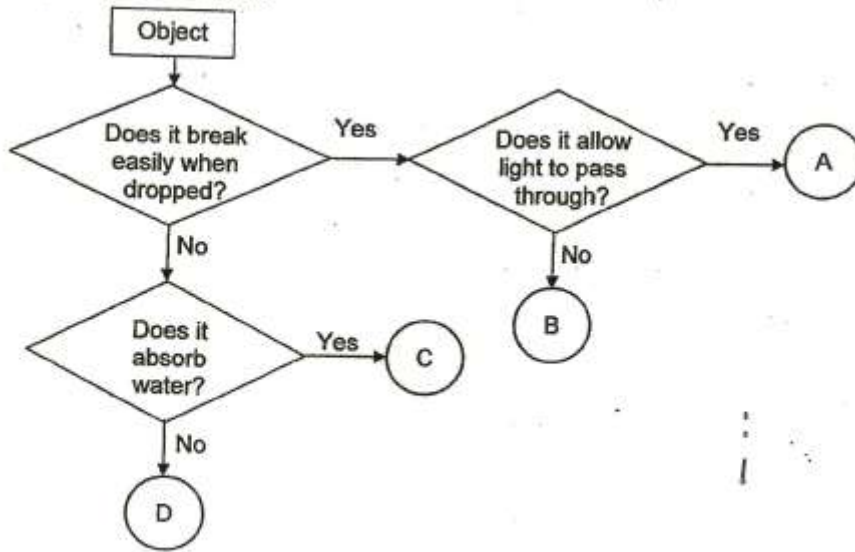
C

- (a) Based on what you can observe from the pictures, which one of the above animals, A, B or C, does **not** belong to the same group? Give a reason for your answer. (Do not mention the animal group.) [1]

- (b) Which animal group does A belong to?

- (c) State two characteristics of the animal group mentioned in part (b). [2]

Study the flow chart below.



Based on the information in the flow chart, state two characteristics of object B. [2]

Draw a line to match each letter in the flow chart to the correct object below. [2]

A •

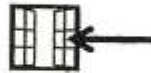
•



plastic ball

B •

•



window pane

C •

•



mirror

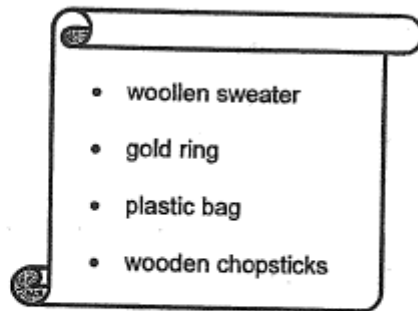
D •

•

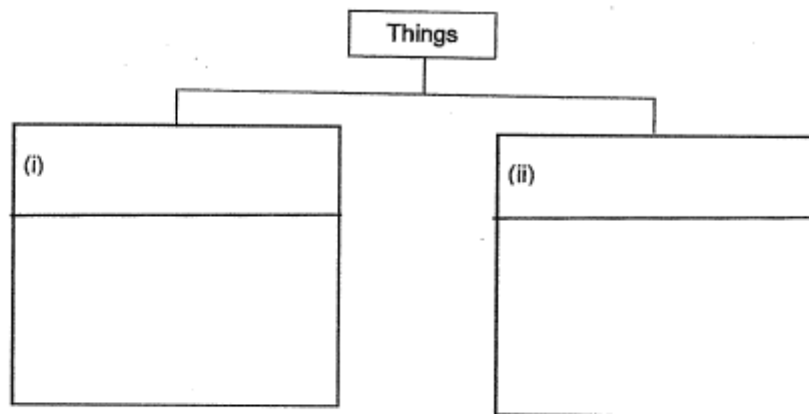


sponge

29. Bala was given a list of things shown below.

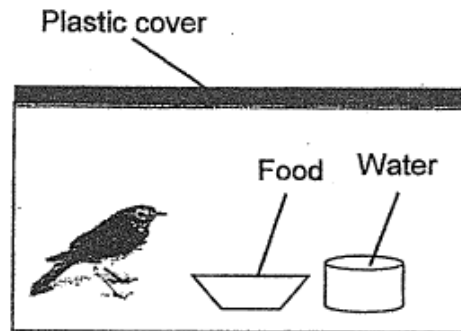


(a) Classify the things in the list above into two groups based on the physical properties of the materials they are made of. Give a suitable heading for each group. There should only be **two** objects in each group. [2]



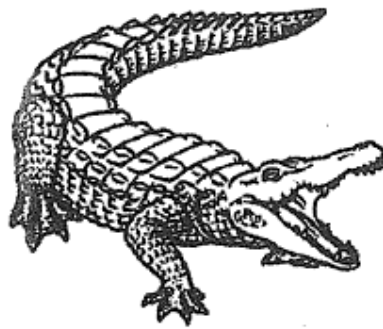
(b) Name another material that is suitable for making a pair of chopsticks. [1]

Susan found a bird on her way home from school. She decided to bring it home and keep it as a pet. She placed the bird in the set-up as shown below.



Susan's mother saw the set-up that she has made for the bird and told her that it may not survive long in that set-up. What was wrong with Susan's set-up? [1]

What can she do to ensure that the pet bird survives as long as possible in the set-up? [1]



Animal X



Animal Y

- (a) Identify the groups of animals that Animal X and Animal Y belong to. [1]

Animal X: _____

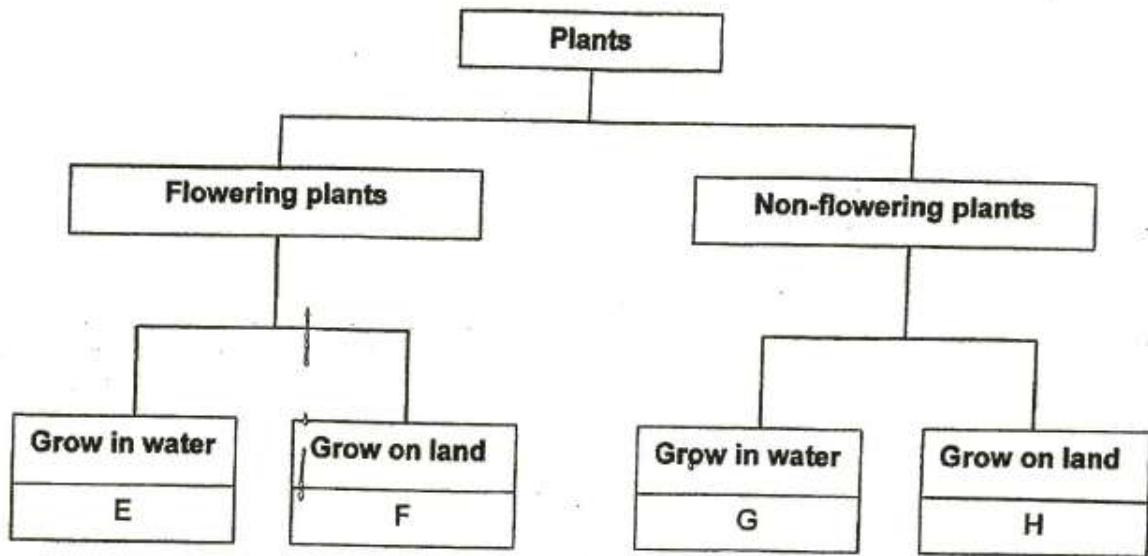
Animal Y: _____

- (b) Based only on what you can observe from the pictures above, state one similarity between the two animals. (Do not mention their shape, size or colour.) [1]

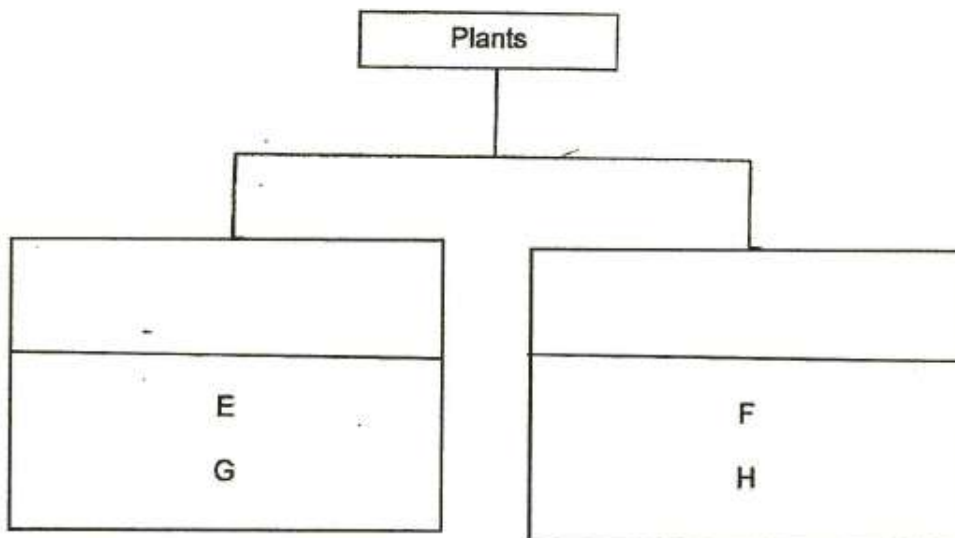
- (c) Based only on what you can observe from the pictures above, state one difference between the two animals. (Do not mention their shape, size or colour.) [1]

- (d) How do Animal X and Animal Y reproduce? [1]

32. Study the classification chart below.

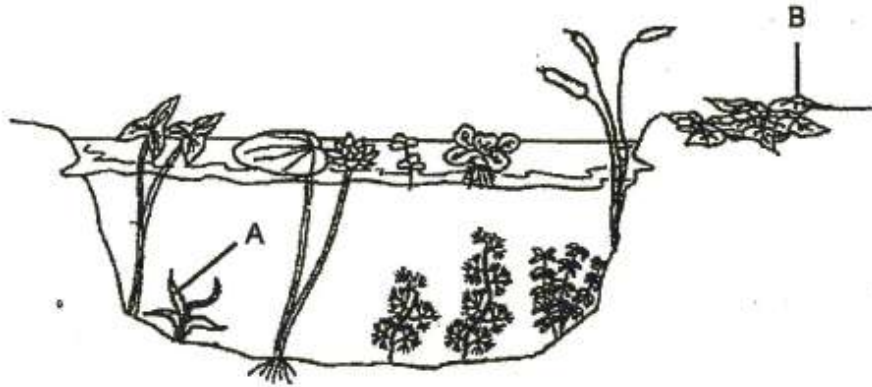


- (a) Plants E, F, G and H are regrouped into two different groups. Using the information from the classification chart above, write down two suitable headings for the classification chart below. [1]



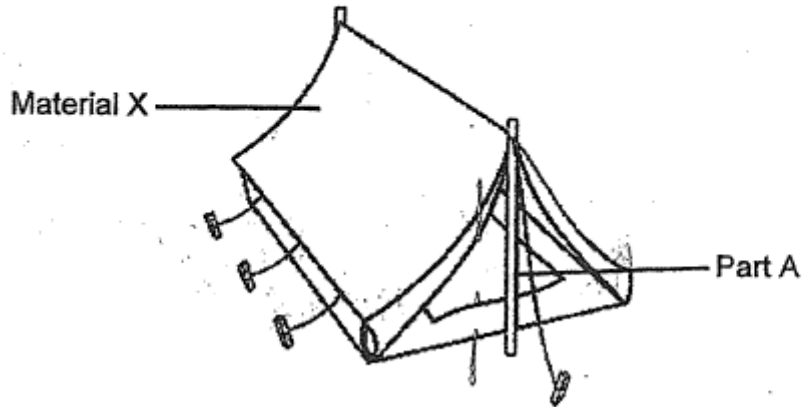
With reference to the previous question:

- (b) The picture below shows some plants.



Which plant, A or B, can be grouped together with E and G in part (a)? [1]

The scouts had their outdoor camp in the school field. Their teacher told them that they would be sleeping in a tent which would provide them shelter from the sun and rain. The tent can be rolled up and placed into a small bag to be carried around.

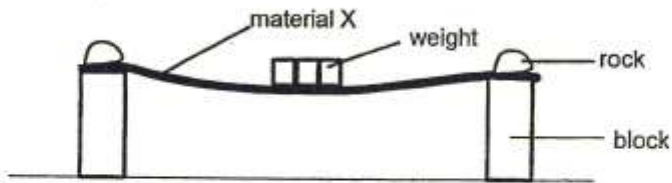


What physical property must material X have in order to provide shelter from the sun? [1]

State two physical properties of material X, other than the one stated in part (a) that makes it a suitable material for making the tent. [2]

Name a material that can be used to make part A. [1]

Wee Boon placed material X on two blocks as shown in the picture below. He added 1-kg weights at the centre of material X one at a time until the material broke.



He repeated the experiment with materials Y and Z of the same thickness and size and recorded his findings in the table below.

Material	Number of 1-kg weights added to the material until it broke
X	17
Y	3
Z	100

Arrange the materials, X, Y and Z, from the weakest to the strongest. [1]

(weakest) (strongest)

Wee Boon concluded that material Z is the most suitable material to be used to make a table. Explain how Wee Boon came to this conclusion based on the information from the table. [1]

Which physical property of the material was Wee Boon testing? [1]
